

For Sale on Market

# \$1,971,250

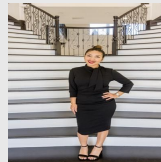
Call 7138840322 Today!

## GENERAL DESCRIPTION

**Lotsize:** 9,038,700

**MLS# / Area:** SMABOR-610113

207.50 +/- ACRES. Fayette County Located 10 miles North of I-10 from Flatonia and 18 Miles South of Hwy 71 Smithville. approx 2 hours to Houston or San Antonio. Quiet and Peacefull, Paved County Road access, Gated entry. Current use is Grazing Cattle. A unique blend of open pasture, wooded areas, mostly level terrain with areas of creek-beds and 2 Ponds. Several Potential homesites. Electric nearby, public water available listing agent can provide estimate upon request. Surrounded by large tracts of land. Best Use livestock, equestrain, recreational, Homestead, solar farm,



Presented By  
**Alyssa Lienau**

Century 21 Lucky Money

7138840322

Listing Broker  
**Stanberry REALTORS**

Anchor Ranch Loop, Flatonia, TX 78941

Visit <https://www.har.com/SMABOR-610113> for more information