

For Sale on Market

\$85,000

Call 7138840322 Today!

GENERAL DESCRIPTION

Subdivision: SELMA PARK ESTATES

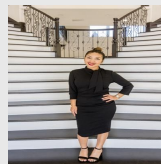
Property Type: Lots

Lotsize: 11,239

MLS# / Area: SA1957217

LOTS

Build your dream home on this prime residential lot in one of San Antonio's fastest-growing areas. This level parcel presents a rare opportunity to design and build exactly what you envision, offering both flexibility and long-term value. Ideally located near IH-35 and Loop 1604, the property is positioned within a high-growth corridor surrounded by ongoing development, including the upcoming University Hospital campus. Enjoy convenient access to shopping, dining, and entertainment at The Forum at Olympia Parkway, IKEA, RBFCU, Academy, and Costco. Just minutes from Randolph Brooks Air Force Base and Fort Sam Houston, this location combines everyday convenience with excellent accessibility. No HOA provides added freedom to build according to your preferences. Opportunities like this are limited; secure your place in this rapidly expanding area. Photo markers are approximate and provided for general reference only. Buyer to independently verify boundaries and property location, as well



Presented By
Alyssa Lienau

Century 21 Lucky Money

7138840322

Listing Broker
Realty Advantage

0 Utopia Blvd, Selma, TX 78154

Visit <https://www.har.com/SA1957217> for more information