

For Sale on Market

\$294,900

Call 7138840322 Today!

SINGLE-FAMILY, 3 BEDS, 2 FULL BATH(S)

The three-bedroom Encino plan by LGI Homes is now available at Rosewood Estates. This single-story home has a spacious family room, upgraded kitchen, formal dining and a beautiful covered back patio. With a chef-ready kitchen and a sizable dining room, dinner parties in the Encino are sure to impress guests! Prepare fabulous meals in the kitchen filled with stainless steel appliances, granite countertops and a sizeable kitchen island. After dinner, enjoy sharing your favorite memories under the covered patio! Enjoy a home filled with the upgrades and space you have been looking for!

GENERAL DESCRIPTION

Subdivision: ROSEWOOD

Property Type: Single-Family

Bedrooms: 3

Baths: 2 Full

Stories: 1

Garage: 2 / Attached

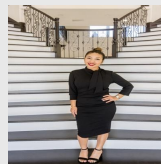
Style: Traditional

Year Built: 2026

Building Sqft: 1,316 / Builder

Maintenance Fee: \$396 / Annually

MLS# / Area: SA1957100



Presented By
Alyssa Lienau

Century 21 Lucky Money

7138840322

Listing Broker
LGI Homes

16181 Farmer, Lytle, TX 78052

Visit <https://www.har.com/SA1957100> for more information