

For Sale on Market

\$227,400

Call 7138840322 Today!

LOTS

Just off I35 at exit 65 is 11.37 acres, and a great location just two minutes South of Cotulla. This property has lots of space to build and is suitable for residential as well as commercial. With no restriction it's a great investment opportunity and easily accessible from the Interstate. This area has a variety of business and industry with San Antonio just 80 miles Northeast and Laredo being 60 miles Southwest.

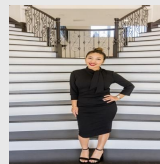
GENERAL DESCRIPTION

Subdivision: OUT/LA SALLE COUNTY

Property Type: Lots

Lotsize: 495,277

MLS# / Area: SA1919238



Presented By
Alyssa Lienau

Century 21 Lucky Money

7138840322

Listing Broker
Real

2550 Interstate 35, Cotulla, TX 78014

Visit <https://www.har.com/SA1919238> for more information