

For Sale on Market

\$349,000

Call 7138840322 Today!

GENERAL DESCRIPTION

Subdivision: MYSTIC SHORES

Property Type: Lots

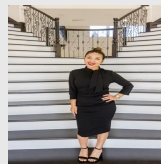
Lotsize: 122,839

Maintenance Fee: \$414 / Annually

MLS# / Area: SA1852140

LOTS

Mystic Shores is a 7,000-acre lakeside community in the heart of the Texas Hill Country situated between the bends of the Guadalupe River and the North Shore of Canyon Lake. Homesites range from 1-20 acres and there is no time limit to build. This 2.8 acre hilltop lot is partially cleared, has a level building site that slopes down into a valley with no rear neighbor's and has a high elevation point which provides for breathtaking views. Mystic Shores amenities include pools, pickleball-tennis-basketball courts, lakefront park, community boat ramp, 140 acre wildlife reserve and secure access RV/Boat storage facility for use by property owners. With 80 miles of shoreline, 23 boat ramps and 2 marinas you can enjoy boating/sailing, water skiing, kayaking, fishing, scuba diving, hiking, dining, shopping, and much more it's no wonder people love Canyon Lake. Located between San Antonio and Austin you are a short commute to 281/Spring Branch, Bulverde, Blanco, Wimberley, Boerne and New Braun



Presented By
Alyssa Lienau

Century 21 Lucky Money

7138840322

Listing Broker
BHHS Don Johnson REALTORS

949 Mystic Parkway, Spring Branch, TX 78070

Visit <https://www.har.com/SA1852140> for more information