



For Lease on Market

\$7,000

Call 972-561-0804 Today!

RENTAL - SINGLE FAMILY, 5 BEDS, 4 FULL & 2 HALF BATH(S)

Luxury cul de sac home in The Tribute Lakeside Golf & Resort Community! Five bedrooms plus office, four full bathrooms and two half, game room and media room plus 3 car garage with electric car chargers. One of the largest lots in the entire neighborhood providing tons of space to play and entertain. On the side you have a gate with paved driveway to park a boat or rv. The property is equipped with a comprehensive Mosquito Squad Perimeter System, featuring integrated misting nozzles strategically hidden throughout the entire property line and all porch areas. Experience the pinnacle of energy efficiency with a massive 19 kW solar array designed to significantly offset electricity expenses. The heart of this home is a premium Savant Smart Home System, providing intuitive, centralized control over your entire environment. Unlike standard smart setups, Savant offers a unified interface to manage: whole home audio, precision lighting, & centralized control. Enjoy 13+ miles of nature trails along Lake Lewisville! Ideally located by Prestwick Stem Academy Elementary School & Strike Middle School w athletic facilities: football field, track, tennis courts, etc. Amenities include multiple resort style community pools, children's splash park, playgrounds, dog parks, fishing throughout the ponds, neighborhood events & Two Award-Winning Golf Courses w bar & restaurants. Marina started construction in the neighborhood w beach volleyball & waterfront area for events! Conveniently located close to Legacy

GENERAL DESCRIPTION

Subdivision: The Glen Ph 2 At Tribute

Property Type: Single Family Homes (Lease)

Bedrooms: 5

Baths: 4 Full & 2 Half

Stories: 2

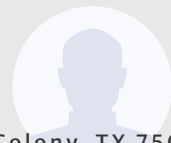
Garage: 3 / Attached,Oversized

Year Built: 2016

Building Sqft: 4,465 /

Lotsize: 17,598

MLS# / Area: NTREIS-21240332



Get in touch
Katherine Meyers

972-561-0804

7600 Glenwick, The Colony, TX 75056

Visit <https://www.har.com/NTREIS-21240332> for more information

Coldwell Banker Realty Plano