



For Sale on Market

**\$95,000**

Call 7138840322 Today!

## RESIDENTIAL - SINGLE FAMILY

Blank canvas ready for you to finish out as you wish or use as you so desire. NO restrictions on this .87 acre open lot just west of Paris, Texas. New subdivision with mixed use, including single family homes, barndominiums and shop houses. This is a 30x50 open span metal structure with roll-up door, standard entry door ready to complete to fit your need. Water and electricity are available at the road front. Out of the city limits which will require the installation of sewer system to accommodate the intended use of the structure. Plenty of room remaining to add other structures, carport, garage, etc. Just a few minutes from Paris for retail, dining and other amenities.

### GENERAL DESCRIPTION

**Subdivision:** HWY 82 SUBDIVISION

**Property Type:** Residential - Single Family

**Stories:** 1

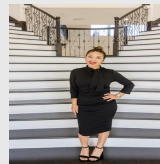
**Style:** Barndominium

**Year Built:** 2025

**Building Sqft:** 1,500 /

**Lotsize:** 37,941

**MLS# / Area:** NTREIS-21226271



Presented By  
**Alyssa Lienau**

Century 21 Lucky Money

7138840322

Listing Broker  
Glass Land and Home LLC

24 PR 24970, Brookston, TX 75421

Visit <https://www.har.com/NTREIS-21226271> for more information