

For Sale on Market

**\$75,000**

Call 7138840322 Today!

## LAND / UNIMPROVED LAND

Discover the perfect place to build your dream home on this beautiful 1.02-acre homesite, ideally situated at the end of a quiet cul-de-sac. Tucked away in a peaceful neighborhood, this property offers the perfect balance of privacy, space, and community charm. Cul-de-sac living brings a number of sought-after advantages—minimal through traffic, enhanced safety, and a quieter, more relaxed atmosphere. It's an ideal setting for those who value tranquility, whether you're enjoying a morning coffee outdoors or watching the sunset from your future porch. With just over an acre, this homesite provides ample room to design and build exactly what you envision, with space for a custom home, outdoor living areas, and more. The generous lot size offers flexibility while still being manageable, making it a perfect canvas for your plans. If you're looking for a serene setting with the added benefits of cul-de-sac living, this property is a standout opportunity.

### GENERAL DESCRIPTION

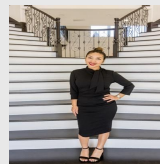
**Subdivision:** Pack Saddle Farms

**Property Type:** Land / Unimproved Land

**Lotsize:** 44,431 / PUBREC

**Maintenance Fee:** \$60 / Annually

**MLS# / Area:** NTREIS-21224755



Presented By  
**Alyssa Lienau**

Century 21 Lucky Money

7138840322

Listing Broker  
**Whitten Real Estate**

237 Codybug Rd, Abilene, TX 79602

Visit <https://www.har.com/NTREIS-21224755> for more information