

For Sale on Market

**\$299,999**

Call 512-944-3121 Today!

## RESIDENTIAL - CONDO , 1 FULL BATH(S)

Rare industrial loft opportunity in the heart of Deep Ellum's trendy Tower 22 District. This true urban space delivers authentic loft character with clean, modern industrial design. Think soaring ceilings, oversized windows, and exposed ductwork that gives the space its raw, architectural edge. The open-concept layout creates ideal flexibility for living, entertaining, or working from home, supported by mixed-use zoning for added versatility. Unlike most properties in the area, this one offers no HOA. Inside, you'll find a convenient stackable washer and dryer, plus secure gated access and two covered parking spaces in the rear. Positioned minutes from Baylor, Downtown Dallas, and I-30, you're connected to everything while immersed in one of the city's most energetic neighborhoods. True urban living. Mixed-use flexibility. Secure parking. No HOA. Prime Tower 22 location. Opportunities like this don't come around often.

### GENERAL DESCRIPTION

**Subdivision:** Main Street Condos

**Property Type:** Residential - Condo

**Baths:** 1 Full

**Stories:** 1

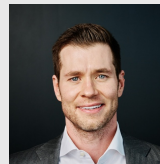
**Style:** Loft

**Year Built:** 1952

**Building Sqft:** 1,202 /

**Lotsize:** 10,498

**MLS# / Area:** NTREIS-21191078



Get in touch  
**Selden Tual**

512-944-3121

COMPASS

Compass RE Texas, LLC.  
214-814-8100

4210 Main St, Dallas, TX 75226

Visit <https://www.har.com/NTREIS-21191078> for more information