

For Sale on Market

\$5,900,000

Call 7138840322 Today!

LAND / UNIMPROVED LAND

Just under 130 acres of prime land off of I-35 in the rapidly growing Hill County, TX. Estimated 750 Feet of frontage on the I-35 Service Road. Property is located outside of city limits with no zoning making it a prime location for a variety of commercial or industrial uses. Land is currently AG Exempt making it perfect to buy and hold as well.

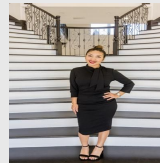
GENERAL DESCRIPTION

Subdivision: NA

Property Type: Land / Unimproved Land

Lotsize: 5,650,170 / SEEREMRK

MLS# / Area: NTREIS-21105402



Presented By
Alyssa Lienau

Century 21 Lucky Money

7138840322

Listing Broker
Paragon, REALTORS

TBD I-35 Rd, Abbott, TX 76621

Visit <https://www.har.com/NTREIS-21105402> for more information