

For Sale on Market

\$486,900

Call 7138840322 Today!

COUNTRY HOMES/ACREAGE

Water fowl hunters will love this hunting property that has nearly 0.8 miles of Lake Stamford frontage. The water fowl love that area west of the lake bridge and you will too. The property has plenty of hunting opportunities for Whitetail deer and feral hog, plus you'll have access to great fishing on Lake Stamford. This might be one of those properties that require you to forward mail. The terrain change gives you great views of the property and the lake. For the right price, the seller will convey his butt hut (RV), two brand new blinds, an enclosed trailer, and an ATV; that makes it almost move in ready! Imagine those mornings when you wake up from the camper, fix yourself a good cup of joe, and walk out to enjoy nature...the coyotes will be waiting on you to perform, and they won't disappoint. Come out to Haskell County and see what all the fuss is about on this great lakeside property setup for the outdoorsman in mind. You'll be glad you did! Game photos available upon request.

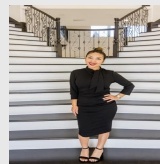
GENERAL DESCRIPTION

Subdivision: Melchor

Property Type: Country Homes/Acreage

Lotsize: 6,331,450 / PUBREC

MLS# / Area: NTREIS-20983373



Presented By
Alyssa Lienau

Century 21 Lucky Money

7138840322

Listing Broker
EKDAHL REAL ESTATE

T B D FM 600, Haskell, TX 79521

Visit <https://www.har.com/NTREIS-20983373> for more information