



For Sale on Market

\$1,306,800

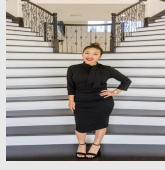
Call 7138840322 Today!

LAND / UNIMPROVED LAND

5 Acre Development Tract Zoned Planned Development for Commercial & Retail Uses. Over 500' of Frontage on Loop 322 with great visibility and access. Location on the attached maps is approximate and the acreage can be modified as needed as the 79 acre parent tract is undeveloped.

GENERAL DESCRIPTION

- Subdivision:** Blind Asylum Lands Sec 62
- Property Type:** Land / Unimproved Land
- Lotsize:** 217,800
- MLS# / Area:** NTREIS-20673473



Presented By
Alyssa Lienau
 Century 21 Lucky Money 7138840322

Listing Broker
 Chris Barnett Real Estate

3400 Loop 322, Abilene, TX 79602

Visit <https://www.har.com/NTREIS-20673473> for more information