



For Sale on Market

\$160,000

Call 7138840322 Today!

GENERAL DESCRIPTION

Subdivision: Sevilla

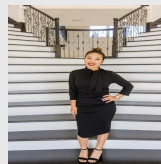
Property Type: Residential Lots

Lotsize: 21,780

MLS# / Area: GMARTX-495217

RESIDENTIAL LOTS

Are you looking to build a FOURPLEX or multifamily units?? Great opportunity to own half an acre to finally build your dream home or build an investment property that - 4 units or possibly more- that can generate passive income! Lot sits at the end of a small subdivision - closest intersection Canton Rd and Tower Rd. In 10 minutes you can get access to the Expressway for quick travel, Walmart for everything you need, Edinburg Scenic Wetlands & World Birding Center for nature lovers, AMC theatre for entertainment, and the Vackar Stadium for sports enthusiasts! 15 minutes travel to UTRGV, county courthouse, the Shoppes on Trenton and 281 and HEB! Versatile land that is waiting to be explored and put to good use!! Electricity -magic valley area, water- north alamo water, septic



Presented By
Alyssa Lienau

Century 21 Lucky Money

7138840322

Listing Broker
RE/MAX elite

Jeffery Drive, Edinburg, TX 78544

Visit <https://www.har.com/GMARTX-495217> for more information