

For Sale on Market

**\$8,500**

Call 7138840322 Today!

## GENERAL DESCRIPTION

**Subdivision:** Antelope Acres

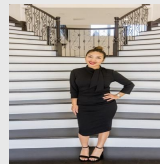
**Property Type:** Residential Lots

**Lotsize:** 444,748

**MLS# / Area:** GEPARTX-940844

## RESIDENTIAL LOTS

Discover wide-open West Texas with this 10.207-acre tract located in Hudspeth County near Salt Flat. Situated in Section 25, Block 71, Township 2 of the T&P Railroad Survey, this property offers level terrain and expansive desert and mountain views. Property features dirt road access and access, making it ideal for recreational use, off-grid living, or future residential development. Conveniently located within driving distance to Guadalupe Mountains National Park and approximately 1.5 hours from El Paso. Buyer to verify all utilities, access, and restrictions. Boundary lines shown in photos are approximate for reference only.



Presented By  
**Alyssa Lienau**

Century 21 Lucky Money

7138840322

Listing Broker  
Home Pros Real Estate Group

Pn63565, Salt Flat, TX 79847

Visit <https://www.har.com/GEPARTX-940844> for more information