



**For Sale** on Market

**\$425,000**

Call 7138840322 Today!

## COUNTRY HOMES/ACREAGE

This quaint 2-bedroom, 2-bath Rock home sits on 11.42 beautiful, serene acres with views of the hills around Kimble County. The house has an open floor plan with a rock fireplace and spacious bedrooms and bathrooms. A third flex space could be made into a 3rd bedroom if needed or can serve as an extra living space. The kitchen is spacious with a walk-in pantry and a laundry closet close by for all working needs. There are great front and back porches to sit and relax and watch the abundant wildlife the quiet property offers. The barn offers great storage and work spaces as well as an apartment that just needs finishing touches. Property has a shared well. Property has close proximity to the North Llano river and Junction.

### GENERAL DESCRIPTION

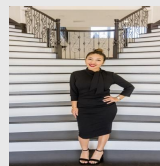
**Subdivision:** Big Draw Ranches

**Property Type:** Country Homes/Acreage

**Style:** Ranch

**Lotsize:** 497,455

**MLS# / Area:** CHCBORTX-104119



**Presented By**  
**Alyssa Lienau**

Century 21 Lucky Money

7138840322

**Listing Broker**  
**Town Creek Properties**

810 -- Kc 271, Junction, TX 78649

Visit <https://www.har.com/CHCBORTX-104119> for more information