

For Sale on Market

**\$550,000**

Call 7138840322 Today!

## COUNTRY HOMES/ACREAGE

La Vista Ranch is 51.3 acres of scenic delight, located just a few miles north of Junction, Texas. If you are looking for a place to hunt, ride your UTV, watch amazing sunsets and be able to see for miles, this ranch has all that, and more! Located along KC 311, the county road frontage provides year-round easy access to your property. Pedernales Electric Cooperative electricity is available all along the county road, allowing you to run power to your desired hunting camp, or homesite, with ease. The juniper has been cleared throughout a portion of the ranch, with the remaining area being left native for wildlife habitat. The topography varies from rolling to rugged, with a cleared roadway to the top of the 200-foot hills already in place! Up on top, there is a protein feeder to boost the local deer potential, with a blind and feeder located down in a valley below. Whitetail deer, turkey and the occasional exotic are not hard to find on this native paradise. Come see for yourself all that lies within the La Vista Ranch, along with all that you can see for miles around! \*Owner is a Real Estate Broker\*

### GENERAL DESCRIPTION

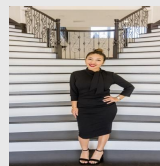
**Subdivision:** N/A, Not In Sub

**Property Type:** Country Homes/Acreage

**Style:** Ranch

**Lotsize:** 2,234,630

**MLS# / Area:** CHCBORTX-101641



Presented By  
**Alyssa Lienau**

Century 21 Lucky Money

7138840322

Listing Broker  
Bierschwale Land Company

1167 -- Kc 311, Junction, TX 76849

Visit <https://www.har.com/CHCBORTX-101641> for more information