

For Sale on Market

**\$630,000**

Call 7138840322 Today!

## COUNTRY HOMES/ACREAGE

Located just 7 miles from the charming town of Junction, this property is located off KC 311. The gem of this property is the large rock face, visible as you drive up along the county road. The tract features two large hills, creating a valley in the middle which is a perfect area for hunting or a homesite. Pedernales Electric Cooperative electricity is available along the county road frontage, meaning easy access to bring it to wherever you desire. Currently, the tract is equipped with an elevated hunting blind looking down at a feeder, with an abundance of wild game. Some areas of the property have been selectively cleared of juniper, leaving native brush for wildlife, with other areas still having more dense brush cover. The combination creates a space for whitetail deer, turkey and some introduced exotics to roam without worry. Rugged beauty and great views from the higher elevations make this tract the perfect place for a hunting paradise or a future homeplace!  
\*Property is owned by Listing Broker\*

### GENERAL DESCRIPTION

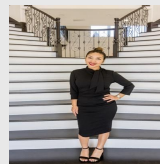
**Subdivision:** N/A, Not In Sub

**Property Type:** Country Homes/Acreage

**Style:** Ranch

**Lotsize:** 2,713,790

**MLS# / Area:** CHCBORTX-101640



Presented By  
**Alyssa Lienau**

Century 21 Lucky Money

7138840322

Listing Broker  
Bierschwale Land Company

1147 -- Kc 311, Junction, TX 76849

Visit <https://www.har.com/CHCBORTX-101640> for more information