

Under Contract - Pending on Market

\$1,962,200

Call 7138840322 Today!

GENERAL DESCRIPTION

Subdivision: Abst 135 John Gibbs Sur

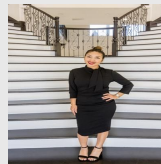
Property Type: Residential Lots

Lotsize: 403,366

MLS# / Area: CCARTX-397539

RESIDENTIAL LOTS

PRIME property with FULL EXPOSURE! Located on the corner of HWY 181 (Railroad Ave) and FM 631. The Commercial zoned property is ideal with its accessibility to the town of Taft and all who frequent Hwy 181. This highway is the connection between the growing industrial and commercial areas of Sinton, Gregory-Portland, and Ingleside. Many workers traveling to and from Exxon, Cheniere, Voestalpine, and Steel Dynamics, not to mention vendors bringing goods to this area and the surrounding towns folk. What more do you need to get your business discovered and going? Offering 3 acres of all kind of possibilities with potential to purchase more out of the 9 total.



Presented By
Alyssa Lienau

Century 21 Lucky Money

7138840322

Listing Broker
KM Premier Real Estate

Hwy 181 lot: 0, Taft, TX 78390

Visit <https://www.har.com/CCARTX-397539> for more information