

For Sale on Market

**\$495,000**

Call 8324554008 Today!

## GENERAL DESCRIPTION

**Subdivision:** Meyerland Sec 07 R/P C

**Property Type:** Lots

**Lotsize:** 14,669 / Appraisal District

**Maintenance Fee:** \$600 / Annually

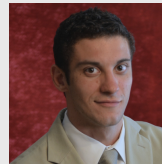
**Market Area:** Meyerland Area

**Key Map:** 531U

**MLS# / Area:** 95635665 / 20

## LOTS

Build your custom dream home on one of the biggest lots in Meyerland. This fantastic corner lot is the third lot from the end of the cul-de-sac. Mature oak trees tower over the perimeter of the property giving it a warm inviting curb appeal look. The Oak trees are far enough away as to not interfere with any future home construction not cause issues with leaves and debris in the future swimming pool. There are currently two curb cuts into the property, one on Braesheather Dr and the other on Cranleigh Court, buyer/builder will need to confirm the driveway options with the city. Walking distance to Godwin Park & Kolter Elementary, zone to Bellaire High, easy access to the Braes Bayou hike and bike trails as well as the 610 freeway. Minutes from the Galleria, Memorial Park, Medical Center, and much more.



Get in touch  
**Andre Vysotskiy**

8324554008

**kw** MEMORIAL  
KELLERWILLIAMS.REALTY

**Keller Williams Memorial**  
7134619393

9410 Cranleigh Ct, Houston, TX 77096

Visit <https://www.har.com/95635665> for more information