

For Sale on Market

\$398,000

Call 4097712859 Today!

SINGLE-FAMILY, 3 BEDS, 2 FULL & 1 HALF BATH(S)

Circa 1925 Victorian blending preserved character with a layout suited for modern living. Original details include pocket doors between living and dining, wood floors, wainscoting, detailed trim, transoms, and a grand 15x11 foyer. The kitchen opens to the dining area with a breakfast bar, glass-front cabinetry, subway tile backsplash, gas range, and ample storage. Bedrooms offer generous closet space, with a primary suite featuring a tiled ensuite bath. Upstairs bath serves additional bedrooms and includes a Samsung washer and dryer. Fenced backyard features a raised deck with pergola and a 12x10 shed with loft. Ideally located near Galveston's Strand and Postoffice District, with easy access to dining, shopping, the cruise terminals, and Seawall.

GENERAL DESCRIPTION

Subdivision: Eaton Sub 91

Property Type: Single-Family

Bedrooms: 3

Baths: 2 Full & 1 Half

Stories: 2

Style: Victorian

Year Built: 1955

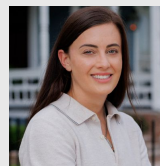
Building Sqft: 2,042 / Appraisal District

Lotsize: 3,080 / Appraisal District

Market Area: East End

Key Map: 774R

MLS# / Area: 89484744 / 33



Get in touch
Caroline Spagnola

4097712859



RE/MAX Leading Edge

4097443300

2523 Avenue M, Galveston, TX 77550

Visit <https://www.har.com/89484744> for more information