

CLOSED on Market

\$189,000

Call 2815461517 Today!

SINGLE-FAMILY, 4 BEDS, 3 FULL BATH(S)

This home is a GEM and recently remodeled!!! Built in 1913, this home is full of history and charm. Enjoy your rocking chairs on the grand front porch. As you walk in the home, you are welcomed with high ceilings in every room. Enjoy the wall of windows in your kitchen. Primary bedroom suite completely remodeled with full bathroom, double vanity, huge soaking tub and spacious shower. Dream closet is a must see and private study that leads to it's own porch. Another spacious primary bedroom with full bathroom downstairs and a 3rd bedroom down. 4th bedroom is upstairs with another full bathroom and huge walk-in closet. Very large utility room offers fantastic storage for your canning and jarring of produce. Another porch in the back of the house is screened in for relaxing. This home is a must see to really appreciate. Located on a corner lot and near town. No HOA. Possible Bed and Breakfast or Airbnb. Welcome Home!

GENERAL DESCRIPTION

Subdivision: Santa Fe Townsite

Property Type: Single-Family

Bedrooms: 4

Baths: 3 Full

Stories: 1

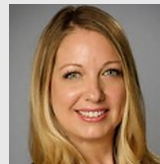
Style: Victorian

Year Built: 1913

Building Sqft: 3,033 / Seller

Lotsize: 6,804 / Appraisal District

MLS# / Area: 71044427 / 49



Get in touch
Jennifer Gayle Spence

2815461517



MVP Realty & Associates

2816679752

505 N 6th St, Silsbee, TX 77656

Visit <https://www.har.com/71044427> for more information