

on Market
\$205,000

Call 2816303669 Today!

SINGLE-FAMILY, 5 BEDS, 3 FULL BATH(S)

Spacious 2,001 sq ft home on an oversized 1/4-acre lot with a functional split floor plan and generously sized bedrooms. The open living area flows into a modern kitchen featuring a large island, perfect for everyday living and entertaining. Enjoy the standout feature, a huge newly built front porch spanning the full width of the home (approx. 76 ft), ideal for relaxing, gatherings, and curb appeal. Plenty of outdoor space for a garden, play area, pets, or future additions. Convenient Conroe location with easy access to major roads. Schedule your showing today!

GENERAL DESCRIPTION

Subdivision: SPRING BRANCH CROSSING

Property Type: Single-Family

Bedrooms: 5

Baths: 3 Full

Stories: 1

Style: Barndominium, Contemporary/Modern, Ranch, Traditional

Year Built: 2025

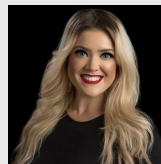
Building Sqft: 2,001 / Builder

Lotsize: 13,074 / Appraisal District

Maintenance Fee: \$200 / Annually

Market Area: Cleveland Area

MLS# / Area: 56382087 / 40



Presented By
Kourtney Scroggins

Designed Realty Group

2816303669

Listing Broker
Vive Realty LLC

18292 Bellfounder Dr, Conroe, TX 77306

Visit <https://www.har.com/56382087> for more information