

For Sale on Market

\$5,164,625

Call (770) 833-6618 Today!

GENERAL DESCRIPTION

Subdivision: THE SOPHIE AT BAYOU BEND

Property Type: Mid/Hi-Rise Condo

Bedrooms: 3

Baths: 3 Full & 1 Half

Year Built: 2019

Building Sqft: 5,195 / Builder

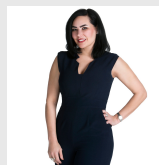
Maintenance Fee: \$1,974 / Monthly

Market Area: Memorial Park

MLS# / Area: 52379549 / 16

MID/HI-RISE CONDO, 3 BEDS, 3 FULL & 1 HALF BATH(S)

The Christie Penthouse Floorplan includes Direct Elevator Access into the home & expands across almost the entire front of the building w/amazing views overlooking Memorial Park & Memorial Neighborhood. With 3 bedrooms, a Study & an additional flex room, you'll be sure to have an incredible home in the sky! The Master bedroom features an addition sitting room w/private terrace & a closet that all would envy. This home includes a 4 car Private Garage, Subzero/Wolf Appliances w/Gas Cooking, 24-Hour Front desk, Fitness Center w/Virtual Yoga Studio, Resistance Pool & Pet Park. Classic Exterior Design Complements its Refined & Polished Interior Finishes, the Essence of Style is in the details at The Sophie. The Central Connector, in the heart of Memorial Park, includes a Land Bridge over Memorial Drive that connects the north and south sides of the Park. It adds approximately 100 acres of green space within walking distance to The Sophie at Bayou Bend.



Get in touch

Misty Meredith

(770) 833-6618



Douglas Elliman Real Estate

(281) 652-5588

6017 Memorial Drive #702, Houston, TX 77007

Visit <https://www.har.com/52379549> for more information