



**For Sale** on Market

**\$209,990**

Call 9364658811 Today!

## SINGLE-FAMILY, 5 BEDS, 3 FULL & 1 HALF BATH(S)

Welcome to Redland Estates, a new subdivision offering brand-new homes at an attainable price point. The Charlotte floor plan features a spacious two-story design with 5 bedrooms and 3.5 baths, including a private primary suite conveniently located on the main level. The open-concept layout creates a seamless flow between the living, dining, and kitchen areas—perfect for both everyday living and entertaining. With generous space, modern design, and a functional layout, this home offers the ideal blend of comfort and style in a growing community.

### GENERAL DESCRIPTION

**Subdivision:** Redland Estates

**Property Type:** Single-Family

**Bedrooms:** 5

**Baths:** 3 Full & 1 Half

**Stories:** 2

**Garage:** 2 / Attached

**Style:** Traditional

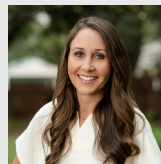
**Year Built:** 2026

**Building Sqft:** 1,600 / Builder

**Lotsize:** 6,970

**Market Area:** Angelina County

**MLS# / Area:** 35410108 / 45



Get in touch  
**Abby Todd**

9364658811

**Gann Medford Real Estate**

9366332630

225 Dana Dr, Lufkin, TX 75901

Visit <https://www.har.com/35410108> for more information