



For Sale on Market

\$1,897,000

Call (713) 557-5007 Today!

GENERAL DESCRIPTION

Subdivision: Lundy Patel

Property Type: Single-Family

Bedrooms: 5-6

Baths: 5 Full & 2 Half

Stories: 2

Garage: 4 / Attached, Oversized

Style: Traditional

Year Built: 2013

Building Sqft: 6,177 / Appraisal District

Lotsize: 19,502 / Appraisal District

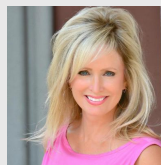
Market Area: Memorial Villages

Key Map: 490C

MLS# / Area: 33789676 / 24

SINGLE-FAMILY, 5 BEDS, 5 FULL & 2 HALF BATH(S)

Gorgeous Spring Valley Village Estate Home on large lot with features galore! Timeless elegance and sophistication add to the beautiful curb appeal of this multi-generational home. Impressive entry, high volume ceilings. Formal dining, large entertaining wet bar, study, hardwoods. Gourmet island kitchen with double everything, SubZeroes- open to huge great room with views of expansive private backyard. Grand master suite down with additional en-suite bedroom on first floor. Downstairs day desk, mud room with lockers and spacious utility room. Storm room can be used as wine storage. Elevator takes you to the second level featuring gameroom, theater room, sewing room and 980 sq foot bonus room not in square footage. 3 en-suite secondary bedrooms. 4 car - 18 ft garage doors with gated motorcourt. Covered outdoor kitchen & patio. Automatic, full generator. Sits on bell bottom piers. Producing fruit trees. SBISD schools. Private police and fire, new city park.



Get in touch

**Tammy
Bateman**

(713) 557-5007



Tammy Bateman Properties

(713) 557-5007

8934 Bace Drive, Spring Valley Village, TX 77055

Visit <https://www.har.com/33789676> for more information