



For Sale on Market

\$120,000

Call 7138840322 Today!

LOTS

Prime high-visibility commercial lot located along the N Loop 610 near Cortlandt in the heart of Houston. With approximately 74 feet of frontage and exceptional daily traffic counts, this site offers outstanding exposure for a small office, service based business, or strategic land investment. Surrounded by established residential neighborhoods and a newly developed apartment community the property benefits from a built-in customer base while maintaining convenient freeway access. Zoned commercial, making it ideal for professional office, boutique retail, showroom, or owner-user development. Positioned among several small vacant parcels, this lot also presents a potential assemblage opportunity for future redevelopment along one of Houston's most traveled corridors. Whether you're an investor seeking long-term appreciation or a business owner looking for maximum visibility in a prime infill location, this property delivers location, access, and opportunity.

GENERAL DESCRIPTION

Subdivision: Sunset Heights

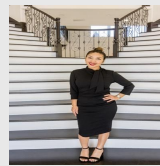
Property Type: Lots

Lotsize: 3,248 / Appraisal District

Market Area: Heights/Greater Heights

Key Map: 453N

MLS# / Area: 18907695 / 9



Presented By
Alyssa Lienau

Century 21 Lucky Money

7138840322

Listing Broker
JLA Realty

0 N Loop E E, Houston, TX 77008

Visit <https://www.har.com/18907695> for more information