

For Sale on Market

\$1,997,000

Call 7139071499 Today!

SINGLE-FAMILY, 6 BEDS, 6 FULL & 3 HALF BATH(S)

Sophisticated and beautifully appointed Museum District residence with ELEVATOR; dramatic architectural staircase and open-concept layout with elegant formals. Gourmet kitchen with marble oversized island offers Wolf range and premium appliances. Primary suite on first floor offers two spacious closets and sitting area with double-sided fireplace. Additional primary suite on each floor with private balcony. Second floor game room off balcony with built-in bar and richly paneled office, private guest or staff suite with full kitchen. Third floor offers dedicated media room, a second home office, an enormous flex room perfect for a home gym, art studio, mahjong area or crafts room. Charming patio off kitchen with cozy fireplace, ideal for intimate gatherings or relaxed evenings. Generous side yard with room for a lap pool. Short stroll from Rice Village, Hermann Park, renowned museums, POE Elementary and Medical Center... this exceptional home blends urban convenience with elegance.

GENERAL DESCRIPTION

Subdivision: Chevy Chase

Property Type: Single-Family

Bedrooms: 6-6

Baths: 6 Full & 3 Half

Stories: 3

Garage: 3 / Attached

Style: Mediterranean

Year Built: 2010

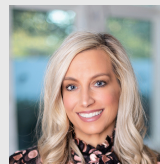
Building Sqft: 6,648 / Appraisal District

Lotsize: 6,500 / Appraisal District

Market Area: Rice/Museum District

Key Map: 492Y

MLS# / Area: 10408138 / 17



Get in touch
Ann Singleton

7139071499



Martha Turner Sotheby's International Realty

7135201981

2247 Bartlett St, Houston, TX 77098

Visit <https://www.har.com/10408138> for more information