

For Sale on Market

**\$190,000**

Call 7138840322 Today!

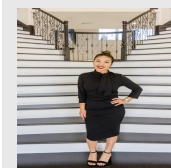
## 255 COUNTY ROAD 668, DEVINE, TX 78016

2 BEDS, 2 FULL BATH(S)

Tucked away from main roads, this property offers privacy while still providing convenience with a Walmart and access to the highway (I-35) only 15 minutes away. The home offers a spacious primary bedroom with connected office and primary bathroom and a walk-in closet. A second bedroom with full bathroom are off the livingroom. Pantry/utility room. Initial 1.5-acre lot provides ample space, with Mulberry, apple, pomegranate, and plum trees already growing. Large greenhouse connected through side door. Carport, water softener and water heater (both installed 2019), dishwasher, washer/dryer hookups, stove/oven. For those interested, additional acreage (up to ~9 acres) is available for purchase, allowing you to expand your estate as you see fit. The additional acres include a dry pond, chicken coop, livestock stalls, and additional storage space. Property is currently ag exempt (very low taxes!). Property is being sold as-is and a survey will be done before close based on Buyer's desired

### GENERAL DESCRIPTION

**Subdivision:** SAN ANTONIO TRUST  
**Property Type:** Single-Family  
**Bedrooms:** 2  
**Baths:** 2 Full  
**Stories:** 1  
**Year Built:** 2004  
**Building Sqft:** 1,046 / Appraisal District  
**Lotsize:** 1  
**MLS# / Area:** SA1957592



Presented By  
**Alyssa Lienau**

Century 21 Lucky Money

7138840322

Listing Broker  
Congress Realty, Inc

255 County Road 668, Devine, TX 78016

Visit <https://www.har.com/SA1957592> for more information