

For Sale on Market

\$232,900

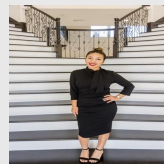
Call 7138840322 Today!

16205 FARMER, LYTLE, TX 78052 2 BEDS, 2 FULL BATH(S)

The Alpine floor plan by LGI Homes is a charming two-bedroom, two-bathroom home filled with designer upgrades you are sure to love! The kitchen features modern white wood cabinets, granite countertops and stainless-steel appliances. Smart home technology, including a programmable thermostat and double-pane insulated windows are also featured throughout the home for energy-efficiency. With two additional closets in each hallway this beautiful home will provide all the storage you need.

GENERAL DESCRIPTION

Subdivision: ROSEWOOD
Property Type: Single-Family
Bedrooms: 2
Baths: 2 Full
Stories: 1
Garage: 2 / Attached
Style: Traditional
Year Built: 2026
Building Sqft: 999 / Builder
Maintenance Fee: \$396 / Annually
MLS# / Area: SA1957082



Presented By
Alyssa Lienau

Century 21 Lucky Money

7138840322

Listing Broker
LGI Homes

16205 Farmer, Lytle, TX 78052

Visit <https://www.har.com/SA1957082> for more information