

For Sale on Market

\$999,999

Call 7138840322 Today!

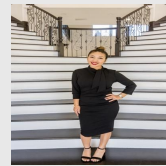
8059 E INTERSTATE 10, CONVERSE, TX 78109

3 BEDS, 2 FULL BATH(S)

Prime 13.873 AC Commercial Land on I-10 Frontage | Excellent opportunity to acquire a 13.873 AC tract located at 8059 Interstate I-10 E. Situated just outside the city limits, this property offers exceptional flexibility and minimal zoning restrictions, making it ideal for a wide range of commercial uses. With direct I-10 frontage and exposure to over 54,000 vehicles per day, the site provides unmatched visibility. Existing improvements include a monument sign, an active helipad, and utility infrastructure with electricity, water, and sewer already in place—reducing development time and costs. Positioned in a rapidly growing corridor with strong traffic counts, this site is ideal for investors, developers, or end users seeking a strategically located property with valuable infrastructure and unique aviation capabilities.

GENERAL DESCRIPTION

Subdivision: N/A
Property Type: Single-Family
Bedrooms: 3
Baths: 2 Full
Stories: 1
Style: Other Style
Year Built: 2017
Building Sqft: 6,095 / Appraisal District
Lotsize: 13
MLS# / Area: SA1956048



Presented By
Alyssa Lienau

Century 21 Lucky Money

7138840322

Listing Broker
Uriah Real Estate Organization

8059 E Interstate 10, Converse, TX 78109

Visit <https://www.har.com/SA1956048> for more information