

Under Contract - Pending on Market

\$282,385

Call 7138840322 Today!

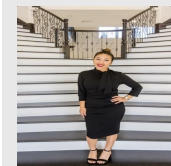
15506 MINT PATCH MEADOW, VON ORMY, TX 78073

5 BEDS, 2 FULL & 1 HALF BATH(S)

The Franklin plan is one of our two-story homes featured in Preserve at Medina in Von Ormy, TX. This new home layout offers 2 classic front exteriors, 5 bedrooms, 2.5 baths, 2 car-garage and 1891 square feet of comfortable living. Step inside The Franklin to find an elongated foyer opening to an open concept living room, kitchen, and dining area. The gourmet kitchen faces the living area so you don't miss a thing while cooking and includes quartz counter tops, stainless steel appliances and shaker style cabinetry. The main bedroom is located toward the front of the home on the second story and features an attractive attached bathroom with a walk-in shower, quartz countertops, a grand walk-in closet and plenty of storage space. The second story includes all secondary bedrooms, and two full bathrooms. You'll have carpeted floors in every bedroom and sheet vinyl flooring in your bathrooms and utility room. Additional features include sheet vinyl flooring in entry, liv

GENERAL DESCRIPTION

Subdivision: PRESERVE AT MEDINA
Property Type: Single-Family
Bedrooms: 5
Baths: 2 Full & 1 Half
Stories: 2
Garage: 2
Year Built: 2025
Building Sqft: 1,892 / Builder
Maintenance Fee: \$396 / Annually
MLS# / Area: SA1949548



Presented By
Alyssa Lienau

Century 21 Lucky Money

7138840322

Listing Broker
Keller Williams Heritage

15506 Mint Patch Meadow, Von Ormy, TX 78073

Visit <https://www.har.com/SA1949548> for more information