

Under Contract - Pending on Market

\$225,610

Call 7138840322 Today!

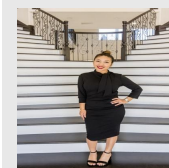
15422 MINT PATCH MEADOW, VON ORMY, TX 78073

3 BEDS, 2 FULL BATH(S)

The Barton is a charming one-story home featured at Preserve at Medina in Von Ormy, TX. Featuring 2 classic front exteriors, this 3 bedroom, 2 bathroom home also offers 1281 square feet of living space and a 2-car garage. A front porch (per plan) welcomes you into the home and opens to the gourmet kitchen which includes quartz counter tops, quality cabinets, stainless steel appliances and an open concept floorplan with the kitchen flowing seamlessly into the dining room and living room. The main bedroom has an attractive ensuite bathroom that features a quartz vanity countertop and quality cabinetry. Enjoy additional storage with a spacious walk-in closet located off of the primary bathroom. Your secondary bedrooms all feature quality carpet flooring and a closet, and can be used as bedrooms, offices, work out spaces or other bonus rooms. The possibilities are endless with The Barton floor plan. Additional features include sheet vinyl flooring in entry, living room, and all

GENERAL DESCRIPTION

Subdivision: PRESERVE AT MEDINA
Property Type: Single-Family
Bedrooms: 3
Baths: 2 Full
Stories: 1
Garage: 2
Year Built: 2026
Building Sqft: 1,280 / Builder
Maintenance Fee: \$396 / Annually
MLS# / Area: SA1946526



Presented By
Alyssa Lienau

Century 21 Lucky Money

7138840322

Listing Broker
Keller Williams Heritage

15422 Mint Patch Meadow, Von Ormy, TX 78073

Visit <https://www.har.com/SA1946526> for more information