

For Sale on Market

\$280,000

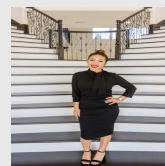
Call 7138840322 Today!

TBD SANDY PINE, LULING, TX 78648

Discover this awesome opportunity to own 14 acres of Texas countryside, offering exceptional privacy, flexibility, and long-term potential. The property features multiple build sites, positioned to take advantage of the natural landscape while maintaining separation and seclusion—perfect for a private estate, multiple homes, or a family compound. With no known restrictions, this tract provides unmatched versatility. Whether your vision includes livestock, animals, recreational use, hunting, weekend retreats, or future development, this property allows the freedom to use the land as you see fit. It can be enjoyed as a purely recreational property, a full-time residence, or a combination of both. A well is already located on the property (condition and operability unknown), and electricity is available, with power currently run to one of the established build sites—helping reduce upfront infrastructure costs. An electric easement along the north side of the property also provides conveni

GENERAL DESCRIPTION

Subdivision: N/A
Property Type: Lots
Lotsize: 609,840
MLS# / Area: SA1940579



Presented By
Alyssa Lienau

Century 21 Lucky Money

7138840322

Listing Broker
Christie's Int'l Real Estate

TBD Sandy Pine, Luling, TX 78648

Visit <https://www.har.com/SA1940579> for more information