

Under Contract - Pending on Market

\$409,000

Call 7138840322 Today!

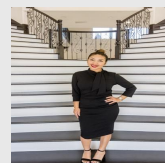
14531 CHANCE, LYTLE, TX 78052

3 BEDS, 2 FULL & 1 HALF BATH(S)

Exceptional 1955 SqFt single story country home on an 1/2 acre (no HOA). Wide open floor plan. 3 BR, 2.5 bath. Solar panels provide near zero or reduced electric bills and conveys with the sale of the house. Hardwood kitchen cabinets, granite counter tops, stainless steel appliances. Large master bedroom with ensuite bath with dual vanities and walk in closets. Solid wood doors throughout. Step into a cozy sitting room ideal retreat for relaxation. Enjoy the flexibility of a bonus room currently utilized as an office, ideal for todays professional. French doors lead out to an expansive 1100 SqFt patio with covered porch, fire pit and gazebo large enough to entertain all of your family and friends. Wood burning fireplace. Screened in front porch. Huge circular concrete driveway with carport and oversized two car garage to include epoxy flooring, built in workbench, shelving. Enjoy the stand alone 450 SqFt workshop for the serious hobbyist, has dedicated power designed for efficiency and

GENERAL DESCRIPTION

Subdivision: HIGHLAND PARK
Property Type: Single-Family
Bedrooms: 3
Baths: 2 Full & 1 Half
Stories: 1
Garage: 2 / Attached
Style: Ranch
Year Built: 2006
Building Sqft: 1,955 / Appraisal District
MLS# / Area: SA1938888



Presented By
Alyssa Lienau

Century 21 Lucky Money

7138840322

Listing Broker
Newfound Real Estate

14531 chance, Lytle, TX 78052

Visit <https://www.har.com/SA1938888> for more information