

For Sale on Market

**\$255,544**

Call 7138840322 Today!

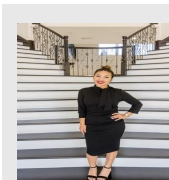
## 121 SUTTON PLACE, UVALDE, TX 78801

3 BEDS, 2 FULL & 1 HALF BATH(S)

MLS# 1931883 - Built by NHC - May 2026 completion! ~ The Glacier Plan from our Freedom Series is a thoughtfully designed 2-story home offering 3 bedrooms, 2.5 bathrooms, and 1,600 square feet of living space, complete with a 2-car garage. As you step inside, you'll pass the staircase to the upper level before arriving at the bright and open family room. This inviting space flows seamlessly into the kitchen and dining area, creating the perfect setting for family time or entertainment. A convenient half bathroom is located just off the kitchen for easy access. The upper level is designed for relaxation and privacy, featuring a spacious primary suite with a walk-in closet and a private bathroom. Two secondary bedrooms, a full bathroom, and a laundry room complete this level. A large loft provides additional living space, ideal for a playroom, media area, or home office. Known for providing the lowest price and price per square foot, National Homecorp is here to help you get more home for

### GENERAL DESCRIPTION

- Subdivision:** The Park  
**Property Type:** Single-Family  
**Bedrooms:** 3  
**Baths:** 2 Full & 1 Half  
**Garage:** 2 / Attached  
**Style:** Traditional  
**Year Built:** 2026  
**Building Sqft:** 1,600 / Builder  
**Maintenance Fee:** \$180 / Quarterly  
**MLS# / Area:** SA1931883



Presented By  
**Alyssa Lienau**

Century 21 Lucky Money

7138840322

Listing Broker  
HomesUSA.com

121 Sutton Place, Uvalde, TX 78801

Visit <https://www.har.com/SA1931883> for more information