

Under Contract - Pending on Market

\$330,000

Call 7138840322 Today!

2123 MAIN, JUNCTION, TX 76849

Position your business in the heart of Junction with this .68-acre commercial lot located directly on Main Street. This level, usable property offers excellent visibility and easy access in one of Junction's most desirable commercial corridors. With its prime location, the property is well-suited for a variety of commercial uses including retail, office space, restaurant, service business, or future development. The flat terrain allows for efficient construction and flexible site planning, making it an ideal investment for business owners or developers looking to establish a presence in a growing Hill Country community. Surrounded by local businesses and benefiting from steady traffic, this Main Street property combines location and accessibility in Junction.

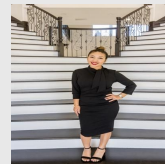
GENERAL DESCRIPTION

Subdivision: N/A

Property Type: Lots

Lotsize: 29,621

MLS# / Area: SA1931486



Presented By
Alyssa Lienau

Century 21 Lucky Money

7138840322

Listing Broker
Plumley Realty

2123 main, Junction, TX 76849

Visit <https://www.har.com/SA1931486> for more information