

For Sale on Market

**\$227,400**

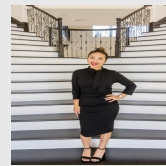
Call 7138840322 Today!

## 2550 INTERSTATE 35, COTULLA, TX 78014

Just off I35 at exit 65 is 11.37 acres, and a great location just two minutes South of Cotulla. This property has lots of space to build and is suitable for residential as well as commercial. With no restriction it's a great investment opportunity and easily accessible from the Interstate. This area has a variety of business and industry with San Antonio just 80 miles Northeast and Laredo being 60 miles Southwest.

### GENERAL DESCRIPTION

**Subdivision:** OUT/LA SALLE COUNTY  
**Property Type:** Lots  
**Lotsize:** 495,277  
**MLS# / Area:** SA1919238



Presented By  
**Alyssa Lienau**

Century 21 Lucky Money

7138840322

Listing Broker  
Real

2550 Interstate 35, Cotulla, TX 78014

Visit <https://www.har.com/SA1919238> for more information