

For Sale on Market

\$799,999

Call 7138840322 Today!

000 VON ORMY RD, VON ORMY, TX 78073

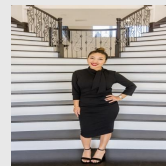
Welcome to Alto Vista located in southwestern Bexar County! This 24.15 acre property features very easy access, scenic views, and an ideal location. With its location less than 1 mile off of IH-35 and paved road frontage on Von Ormy Road this property is located in an area of tremendous growth. From Downtown San Antonio the property is 17 miles and the property is located very close to the Toyota Plant and many housing developments. The topography slopes down in the northeast corner rolling into the Medina River Valley providing amazing views in many directions. The property features approximately 40+ feet of elevation change mostly all on the northeast side and consist of mostly open field areas with about a quarter of the property in brush. For utilities the electricity and water are located along Von Ormy Road. You must see this property in person to imagine all of the potential!

GENERAL DESCRIPTION

Property Type: Country Homes/Acreage

Lotsize: 1,051,970

MLS# / Area: SA1908736



Presented By
Alyssa Lienau

Century 21 Lucky Money

7138840322

Listing Broker
South LLC

000 Von Ormy Rd, Von Ormy, TX 78073

Visit <https://www.har.com/SA1908736> for more information