

For Sale on Market

\$750,000

Call 7138840322 Today!

000 MAIN ST, LYTLE, TX 78052

For Sale - Prime Property - 5.440 Acre Pad Site - Potential commercial development. Great opportunity in this rapidly growing city of Lytle. High-traffic area. Good location with high visibility from Interstate 35. Property located near H-E-B, restaurants, retail and residential. Nearby are several single-family new subdivisions. Located just a short drive south of San Antonio. Take exit 131. Lytle, Texas. Call today for more information.

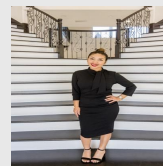
GENERAL DESCRIPTION

Property Type: Lots

Building Sqft: 236,966 / Appraisal District

Lotsize: 5

MLS# / Area: SA1615289



Presented By
Alyssa Lienau

Century 21 Lucky Money

7138840322

Listing Broker
Zuscar Realty, LLC

000 MAIN ST, Lytle, TX 78052

Visit <https://www.har.com/SA1615289> for more information