

For Sale on Market

\$954,000

Call 7138840322 Today!

5175 MARTINEZ CONVERSE RD, CONVERSE, TX 78109

3.37 Acres Prime for Development at the corner of FM 1516 and Binz-Engleman Road in the high growth City of Converse with tremendous visibility. C-store planned on neighboring lot. Idea public school, residential subdivisions surround parcel. 360 roadway frontage, 1516 widening highway by TXdot. Zoning is B-3, general commercial uses allowed. Prime development opportunity in the heart of Converse, underserved residential population.

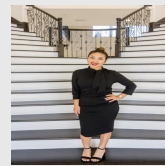
GENERAL DESCRIPTION

Property Type: Lots

Building Sqft: 147,059 / Appraisal District

Lotsize: 3

MLS# / Area: SA1590895



Presented By
Alyssa Lienau

Century 21 Lucky Money

7138840322

Listing Broker
Kuper Sotheby's Int'l Realty

5175 Martinez Converse Rd, Converse, TX 78109

Visit <https://www.har.com/SA1590895> for more information