



For Sale on Market

\$559,000

Call (432) 556-6431 Today!

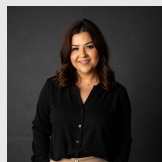
2811 S COUNTY RD 1200, MIDLAND, TX 79706

4 BEDS, 2 FULL & 1 HALF BATH(S)

Beautifully remodeled two-story home offering over 3,500 square feet of living space with 4 bedrooms and 2.5 bathrooms. The expansive primary suite features a spacious bedroom and a private bathroom designed for comfort, relaxation, and abundant natural light. This property also includes an impressive 3,000 square foot insulated shop equipped with electricity, three bay doors, and two RV hookups, with convenient back-entrance access ideal for a home-based business, workshop, or additional storage. A rare opportunity combining residential comfort with exceptional commercial-style functionality.

GENERAL DESCRIPTION

- Subdivision:** South Plains
- Property Type:** Single Family
- Bedrooms:** 4
- Baths:** 2 Full & 1 Half
- Stories:** 2
- Year Built:** 1950
- Building Sqft:** 3,620 /
- Lotsize:** 36,590
- MLS# / Area:** PBBRTX-50090090



Get in touch
Leticia Davila

(432) 556-6431

EXP Realty, LLC
(888) 519-7431



2811 S County Rd 1200, Midland, TX 79706

Visit <https://www.har.com/PBBRTX-50090090> for more information