

**For Sale** on Market

# \$389,000

Call 7138840322 Today!

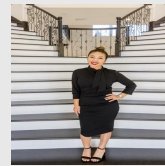
## 1016 COUNTY RD E, LAMESA, TX 79331

3 BEDS, 3 FULL BATH(S)

If you are looking to get out of the City Here is the Opportunity Large Shop, Land, & a Great 3 Bed 3 Bath 3565 sqft 1950 Farm House w/ Basement. A 9600 sqft Shellery & office's, that has a 35''x50'' walk-in cooler/chiller.

### GENERAL DESCRIPTION

- Property Type:** Single Family
- Bedrooms:** 3
- Baths:** 3 Full
- Year Built:** 1950
- Building Sqft:** 3,565 /
- Lotsize:** 304,920
- MLS# / Area:** OBORTX-149227



Presented By  
**Alyssa Lienau**

Century 21 Lucky Money 7138840322

Listing Broker  
The Real Estate Ranch LLC

1016 County Rd E, Lamesa, TX 79331

Visit <https://www.har.com/OBORTX-149227> for more information