

For Sale on Market

\$516,390

Call 7138840322 Today!

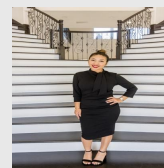
4645 POINTER CT, MCKINNEY, TX 75071

4 BEDS, 3 FULL BATH(S)

NORMANDY HOMES REMY floor plan. Experience the spacious comfort of the 40' Series at Painted Tree Woodland North in McKinney, TX, where elevated design meets vibrant community living. Our Remy plan offers 4 bedrooms, 3 baths, and approximately 2,420 square feet of open-concept living space, complete with modern kitchen, game room, two-car garage, and covered patio. Residents enjoy resort-style amenities including pools, parks, trails, and gathering spaces, all within minutes of major highways, shopping, dining, and top-rated schools—making it easy to feel at home while enjoying the best of McKinney life.

GENERAL DESCRIPTION

- Subdivision:** Painted Tree Woodland North
- Property Type:** Residential - Single Family
- Bedrooms:** 4
- Baths:** 3 Full
- Stories:** 2
- Garage:** 2 / Attached
- Style:** Traditional
- Year Built:** 2026
- Building Sqft:** 2,420 /
- Lotsize:** 2,701 / PUBREC
- Maintenance Fee:** \$270 / Quarterly
- MLS# / Area:** NTREIS-21244876



Presented By
Alyssa Lienau

Century 21 Lucky Money

7138840322

Listing Broker
Colleen Frost Real Estate Serv

4645 Pointer Ct, McKinney, TX 75071

Visit <https://www.har.com/NTREIS-21244876> for more information