



For Sale on Market

**\$1,375,000**

Call 214-701-4884 Today!

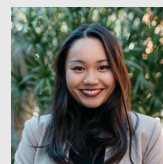
## 1450 JUNIOR DR, DALLAS, TX 75208

2 BEDS, 2 FULL & 1 HALF BATH(S)

Perched among the treetops in coveted East Kessler Park, this exceptional hillside retreat offers a rare mix of thoughtful architecture and an effortless connection to nature. Reimagined by the acclaimed Bernbaum Magadini Architects, the residence is thoughtfully tiered to the land's topography, creating a seamless dialogue between structure and setting. Surrounded by mature trees and lush landscaping, the home unfolds as a private sanctuary—an entertainer's haven where sophistication, and functionality exist in balance. Multiple outdoor living and entertaining spaces are woven into the landscape, evoking a retreat-like ambiance that feels worlds away from the city. Inside, natural light pours in from every angle, softly filtered through a canopy of greenery and framing views from nearly every window. A gracious front patio welcomes you into a dramatic foyer, where vaulted ceilings and exposed beams set the tone for the home's warm, architectural character. Designed with both livability and flexibility in mind, the split-level layout offers intuitive flow, generous storage, and two well-appointed ensuite bedrooms—ideal for guests or multigenerational living. At the heart of the home, the kitchen is a true culinary showpiece. Outfitted with top-tier appliances, including a 6-burner range, three ovens, dual dishwashers, and two sinks, it's designed to perform effortlessly for both intimate dinners and entertaining. Just beyond, a covered private patio extends the living experience outdoors—offering seamless indoor-outdoor flow and an idyllic setting for gathering.

### GENERAL DESCRIPTION

- Subdivision:** East Kessler Park Add 01 Instl  
**Property Type:** Residential - Single Family  
**Bedrooms:** 2  
**Baths:** 2 Full & 1 Half  
**Stories:** 2  
**Garage:** 2 / Attached, Oversized  
**Style:** Contemporary/Modern, Traditional  
**Year Built:** 1949  
**Building Sqft:** 2,838 /  
**Lotsize:** 9,583  
**MLS# / Area:** NTREIS-21240109



Get in touch  
**Thani Burke**

214-701-4884

1450 Junior Dr, Dallas, TX 75208

COMPASS

Compass RE Texas, LLC.

214-814-8100

Visit <https://www.har.com/NTREIS-21240109> for more information