



Under Contract - Pending on Market

\$3,800,000

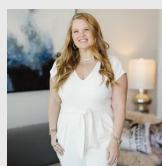
Call 214-546-6315 Today!

6101 CRYSTAL COVE CT, MCKINNEY, TX 75071 4 BEDS, 4 FULL & 1 HALF BATH(S)

Tucked behind a secluded cul-de-sac in Stonebridge Ranch, this custom single-story estate by renowned builder GG Cain sits on a rare, fully treed acre lot where nature surrounds every corner and privacy is absolute. Inspired by the Texas Hill Country and finished to resort-level standards, this home has never been publicly offered for sale. There is nothing else like it in McKinney. A private front courtyard with a tranquil fountain sets the tone upon arrival. Inside, soaring ceilings and walls of glass blur the line between interior living and the lush, mature landscape beyond, with every room intentionally positioned to capture the natural setting that surrounds it. The chef's kitchen is both a statement and a gathering place, featuring custom cabinetry, elevated finishes, a butler's pantry, and a designer-tiled built-in bar that is equal parts function and showpiece. A dedicated movie room, private office, and lodge-inspired flex living space complete an interior designed for deep comfort and effortless entertaining. The primary suite is a world apart, a private wing with a spa-caliber bath, soaking tub, separate vanities, walk-in shower, and a custom closet. A private outdoor shower and dedicated yoga and relaxation garden extend the retreat beyond the walls of the home. Every additional bedroom is a fully ensuite suite, with a separate pool bath serving the outdoor living areas. Outside, an infinity-edge pool anchors an experience that feels more private resort than residence. Professional landscaping, mature trees, and curated outdoor lighting create an atmosphere of serenity both

GENERAL DESCRIPTION

- Subdivision:** Emerald Heights
- Property Type:** Residential - Single Family
- Bedrooms:** 4
 - Baths:** 4 Full & 1 Half
 - Stories:** 2
 - Garage:** 3 / Oversized
- Year Built:** 2021
- Building Sqft:** 5,751 /
- Lotsize:** 45,551
- Maintenance Fee:** \$900 / Annually
- MLS# / Area:** NTREIS-21238436



Get in touch
Carrie Himel

214-546-6315

6101 Crystal Cove Ct, McKinney, TX 75071

Visit <https://www.har.com/NTREIS-21238436> for more information

COMPASS

Compass RE Texas, LLC

469-210-8288