



For Sale on Market

\$850,000

Call 972-697-3518 Today!

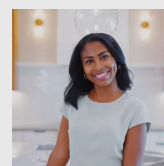
3610 GILLESPIE ST #6, DALLAS, TX 75219

3 BEDS, 3 FULL & 1 HALF BATH(S)

Set within the highly desirable and walkable Mansion Park neighborhood, this corner-unit townhome offers a rare blend of privacy, natural light, and true city living. With windows on multiple sides and only one shared wall, the home lives bright, open, and quietly tucked away — a combination that's increasingly hard to find in this location. The second floor serves as the heart of the home, where an open-concept living, dining, and kitchen layout creates an effortless flow for both everyday living and entertaining. Just off the main living space, a true walk-out balcony extends the home outdoors — perfect for morning coffee, unwinding in the evenings, or hosting with ease. Upstairs, the primary suite feels like a retreat, with enough space for a dedicated sitting area or lounge. The en-suite bath offers a spa-like experience with a soaking tub, separate shower, and double vanity, while dual closets — including a walk-in — provide both functionality and flexibility. Each additional bedroom is thoughtfully designed with its own en-suite bath and generous closet space, making the home equally well-suited for guests, roommates, or a private home office setup. Meticulously maintained, the home features recent updates including a new AC condenser, recently serviced furnace, new attic ladder, and a transferable warranty — offering peace of mind for the next owner. An attached garage with two dedicated parking spaces completes the home, a rare and valuable convenience in this part of Dallas. Located just minutes from the Katy Trail, Turtle Creek

GENERAL DESCRIPTION

- Subdivision:** Gillespie Tr
- Property Type:** Residential - Townhouse
- Bedrooms:** 3
 - Baths:** 3 Full & 1 Half
 - Stories:** 3
 - Garage:** 2 / Attached
 - Style:** Traditional
- Year Built:** 2004
- Building Sqft:** 2,407 /
- Lotsize:** 2,744 / APPRAI
- Maintenance Fee:** \$2,000 / Annually
- MLS# / Area:** NTREIS-21237662



Get in touch
Loren Hall

972-697-3518

3610 Gillespie St #6, Dallas, TX 75219 Compass RE Texas, LLC.

Visit <https://www.har.com/NTREIS-21237662> for more information

COMPASS

214-814-8100