

For Lease on Market

**\$3,100**

Call 7138840322 Today!

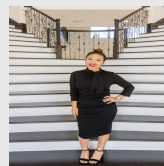
## 717 CORNER POST PATH, CELINA, TX 75009

4 BEDS, 2 FULL & 1 HALF BATH(S)

Light Farms at its Best! Highland Homes Amberley Floor Plan completed in 2020. Open floorplan w split beds for privacy and study that could also be used as 4th bedroom. Stacked kitchen cabinets, gas log fireplace, gorgeous granite countertops, stainless appliances, and engineered hardwoods. Extended primary suite with soaking tub, separate shower, dbl vanities and walk-in-closet. Covered patio and spacious backyard. 2 car garage includes EV charge point and epoxy floors. One pet allowed with some restrictions. Rental includes refrigerator, washer, dryer, whole house water filtration system and reverse osmosis at kitchen sink. Tenants have full access to community gym, pools, tennis, playgrounds, paths & lake. Prosper ISD! Available to tour first week of June and move-in as early as June 5th.

### GENERAL DESCRIPTION

- Subdivision:** Light Farms The Eastland Neighborhood Ph 1
- Property Type:** Single Family Homes (Lease)
- Bedrooms:** 4
- Baths:** 2 Full & 1 Half
- Stories:** 1
- Garage:** 2 / Attached
- Style:** Traditional
- Year Built:** 2019
- Building Sqft:** 2,058 /
- Lotsize:** 5,924 / PUBREC
- MLS# / Area:** NTREIS-21230059



Presented By  
**Alyssa Lienau**

Century 21 Lucky Money

7138840322

Listing Broker  
Compass RE Texas, LLC

717 Corner Post Path, Celina, TX 75009

Visit <https://www.har.com/NTREIS-21230059> for more information