



For Sale on Market
\$420,000
Call 7138840322 Today!

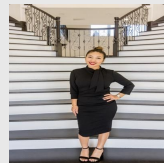
1803 WINDLEA DR, EULESS, TX 76040

4 BEDS, 2 FULL BATH(S)

Welcome to 1803 Windlea Drive, a beautifully maintained home nestled in the heart of Euless, offering comfort, functionality, and an unbeatable location in the Mid-Cities. This inviting residence features a thoughtfully designed layout with spacious living areas, abundant natural light, and a seamless flow perfect for both everyday living and entertaining. The main living room welcomes you with a warm, open feel and connects effortlessly to the dining area and kitchen, creating a central gathering space for family and guests. The kitchen offers ample cabinetry, generous counter space, and a layout designed for both convenience and efficiency. The primary suite provides a private retreat, complete with a well-appointed en-suite bathroom and comfortable space to unwind. Secondary bedrooms are generously sized and versatile, ideal for guests, a home office, or additional living needs. Step outside to enjoy a spacious backyard with plenty of room to relax, entertain, or create your own outdoor oasis. Whether hosting gatherings or enjoying a quiet evening, this outdoor space offers flexibility and potential. Located in an established neighborhood with easy access to major highways, DFW Airport, shopping, dining, and entertainment, this home combines suburban charm with everyday convenience. A wonderful opportunity for buyers seeking a well-cared-for home in a prime location, ready to welcome its next owner. BRAND NEW GUTTERS AND WINDOWS 2024.

GENERAL DESCRIPTION

- Subdivision:** Wilshire Village Add
- Property Type:** Residential - Single Family
- Bedrooms:** 4
 - Baths:** 2 Full
 - Stories:** 1
 - Garage:** 2 / Attached
- Year Built:** 1972
- Building Sqft:** 2,137 /
- Lotsize:** 8,146
- MLS# / Area:** NTREIS-21216843



Presented By
Alyssa Lienau

Century 21 Lucky Money

7138840322

Listing Broker
Compass RE Texas, LLC

1803 Windlea Dr, Euless, TX 76040

Visit <https://www.har.com/NTREIS-21216843> for more information