



**For Sale** on Market

**\$325,000**

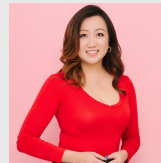
Call 214-518-8905 Today!

## 260 FM 3118, CLIFTON, TX 76634 2 BEDS, 1 FULL BATH(S)

Discover your serene getaway on 5 acres of picturesque land, just moments from the beautiful Lake Whitney. This unique home includes a metal shop with electricity connected! Don't forget the metal shed and a large carport big enough to fit an RV making it the perfect retreat for relaxation or adventure. Whether you seek a permanent residence or a weekend escape, this property near Lake Whitney and Laguna Park is the ideal spot to unwind and enjoy the beauty of the great outdoors. Don't miss out on this incredible opportunity!

### GENERAL DESCRIPTION

**Subdivision:** Alta Vista  
**Property Type:** Residential - Single Family  
**Bedrooms:** 2  
**Baths:** 1 Full  
**Stories:** 1  
**Style:** Barndominium, Traditional  
**Year Built:** 2004  
**Building Sqft:** 1,200 /  
**Lotsize:** 217,800  
**MLS# / Area:** NTREIS-21193991



Get in touch  
**Hong Duong Le**

214-518-8905

Kimberly Adams Realty

817-513-4708

260 Fm 3118, Clifton, TX 76634

Visit <https://www.har.com/NTREIS-21193991> for more information