



For Sale on Market

# \$39,000

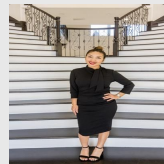
Call 7138840322 Today!

## GENERAL DESCRIPTION

- Subdivision:** Paradise Bay  
**Lotsize:** 12,807  
**Maintenance Fee:** \$60 / Annually  
**MLS# / Area:** NTREIS-21165933

## 742 OAHU LOOP, TOOL, TX 75143

Oversized Lot Near Cedar Creek Lake – One of 7 Available – Package Opportunity Rare opportunity to own an oversized lot just minutes from Cedar Creek Lake in Tool, TX. This property is one of only seven lots currently being offered, with the option to purchase individually or as a package, making it ideal for builders and investors alike. Located very close to the lake and nearby boat and fishing facilities, this lot is perfectly suited for a primary residence, long term rental, or short term rental. Enjoy easy access to boating, fishing, and all the lake amenities while building in a desirable and growing lake community. The generous lot size allows flexibility for home design, outdoor living, and parking without the premium cost of waterfront property. Whether you're looking to build one home or secure multiple lots for a development or investment strategy, this is a unique opportunity with strong potential. ?? Tool, TX ?? Close to Cedar Creek Lake & lake facilities ?? Build-ready oversized lot ?? One of 7 lots available – package pricing available Contact me for pricing, package details, or information on the remaining lots.



Presented By  
**Alyssa Lienau**

Century 21 Lucky Money

7138840322

Listing Broker  
**OnDemand Realty**

742 Oahu Loop, Tool, TX 75143

Visit <https://www.har.com/NTREIS-21165933> for more information